

ANNUAL
REPORT
1991

Leodis Harris, Administrative Judge

Judges

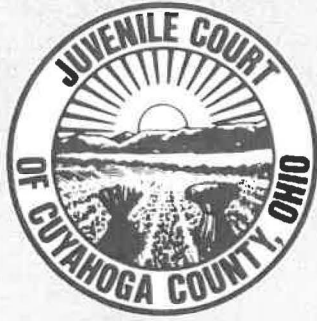
Betty Willis Ruben

Kenneth A. Rocco

Timothy G. Cotner

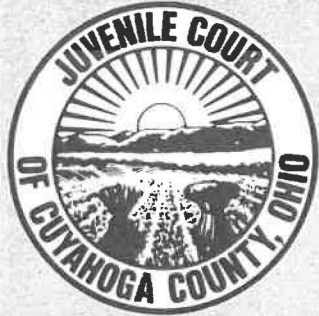
Robert A. Ferreri

Peter M. Sikora



Contents

1. Open Letter to the Community	2
2. Volunteers: Citizen Involvement at Juvenile Court	4
3. Fiscal	7
4. Statistics	9
5. Personnel	15
6. Locations and Services	17



1. Open Letter

TO: The Citizens of Cuyahoga County
The Honorable Geno Natalucci-Persichetti
Director, Ohio Department of Youth Services
The Honorable James Petro, Mary Boyle, and Timothy Hagan
Commissioners of Cuyahoga County

Violence, substance abuse, gangs and overcrowded correctional institutions were but a few of the important issues on the 1991 Cuyahoga County Juvenile Court agenda.

Complaints filed at the Court for violent crimes, including homicide, sex offenses, assaults, robbery, arson, and weapon offenses, increased to 2,851, 17% over 1990. Drug and alcohol offenses rose to 1,379, 6% over the previous year. Compared to five years ago, violent crimes have increased 33% and drug and alcohol filings have increased 260%. Substance abuse filings not only reflect the number of children using drugs but include those in possession of or selling drugs. Although many children come to the attention of the Court for non-drug related complaints, several of these children also present substance abuse problems.

Experts maintain there are over 100 gangs in Cuyahoga County. Gangs are credited with increasing the violent crime rate, possessing and selling illegal drugs, and aggravating substance abuse problems. The Court is working with area activists, the Cleveland Police Department, and area schools to educate and train staff on gang behavior and to reduce the prevalence of gangs.

Over the past ten years the Cuyahoga County Juvenile Court Detention Center's annual daily population has been increasing from a low of 81.9 in 1982 to a high of 138.5 in 1990, partially as a result of the increase in serious delinquency complaints. In 1991, the average daily population declined slightly to 135.8. In addition, the rated capacity of the Detention Center has declined from 108 beds in 1982 to the current 86 beds, primarily due to compliance with American Correctional Association standards. The population was 75% under capacity in 1982 and 63% over capacity in 1991. Overcrowding combined with an antiquated physical structure make a new detention facility a necessity. A management committee, consisting of county and Court employees selected by the Cuyahoga County Commissioners and the Court's administration, was appointed this year to make recommendations concerning a new detention facility. Recommendations were presented to and approved by a citizens' advisory committee. I will be meeting with the County Commissioners to continue discussion of these recommendations.

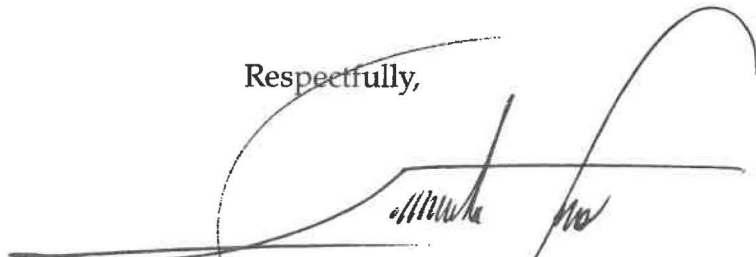
Institutions operated at the state level by the Ohio Department of Youth Services (ODYS) are also experiencing drastic overcrowding. In fiscal year 1991 (July 1, 1990-June 30, 1991), the Department received 3,223 commitments from Ohio counties. This resulted in an average daily population in ODYS facilities of 2,110 children, which is 46% over the rated capacity of 1,446. In an effort to provide commitment alternatives, the Court responded to a request by the United States Justice Department Office of Juvenile Justice and Delinquency Prevention to develop and operate a model juvenile offender boot camp. Cuyahoga County Juvenile Court was one of three national sites selected and will receive \$779,001 from the federal government during the 18 month initiative. The purpose of this endeavor is to develop and test an intermediate sanction for juvenile offenders as an alternative to Ohio Department of Youth Services and Youth Development Center commitments. The Cuyahoga County model blends juvenile justice, educational, social service, and military approaches that emphasize physical conditioning, treatment, discipline, and work. The target population is 120 children a year. The Cuyahoga County Juvenile Court and North American Family Institute jointly coordinate all aspects of this project.

In November, 1991, an audit was conducted by the Commission on Accreditation of Corrections Division of the American Correctional Association (ACA) to reaccredit the Probation Department. The audit covered 228 standards, including administration, personnel, training, fiscal, information and research, placement, and volunteers. Involved in the process was the inspection of written documentation, tours of all probation operations, and interviews with all levels of staff, probationers and their parents. The Department received a score of 99.37 out of a possible 100, having missed only one standard, and will be recommended for reaccreditation at the ACA winter conference in January, 1992. Andrew J. DeSanti, Chief Probation Officer, Matthias Novak, Accreditation Manager, probation staff, and other Court staff involved with the accreditation process are to be commended.

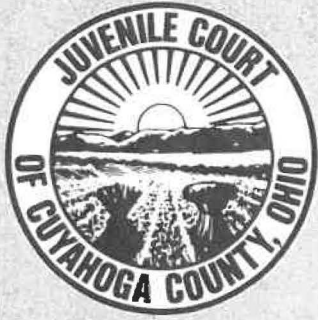
Limited resources and increases in juvenile crime in the 1990's will continue to be a concern of this Court and the juvenile justice system. However, interested and concerned citizens help to respond to increasing challenges. The first juvenile court in the United States became a reality because of the efforts and vision of volunteers. The growth and development of the juvenile justice system are likewise dependent on them. Cuyahoga County Juvenile Court's 1991 annual report is therefore dedicated to its volunteers.

In compliance with Ohio Revised Code Section 2151.18, I submit the 1991 Annual Report of the Cuyahoga County Juvenile Court, which shows the number and kinds of cases, the dispositions, and other data pertaining to the work of the Court.

Respectfully,

A large, stylized handwritten signature in black ink, appearing to read 'Leodis Harris', is written over a horizontal line. The signature is fluid and cursive, with a large loop at the end.

Leodis Harris, Administrative Judge
Court of Common Pleas, Juvenile Division
Cleveland, Ohio



2. Volunteers

Citizen Involvement at Juvenile Court

Volunteerism is a uniquely American experience. Many cultures cannot even conceive of the concept of giving time and energy without financial gain. America was founded on the efforts of volunteers. The Cuyahoga County Juvenile Court also owes a great deal to volunteers and their deep concern for the children and families in difficulty.

Newton D. Baker, a well known Cleveland Mayor, was concerned about the number of children confined in jails with adult criminals. To help address this problem, he inspired the Cleveland YMCA Sociology Club to volunteer as juvenile probation officers. Children who appeared at the various police courts throughout the county were placed under the supervision of one of these volunteers and diverted from the adult system. This was the beginning of a juvenile court in Cuyahoga County. The Cuyahoga County Juvenile Court was officially established in 1902 and is the second oldest juvenile court in the country.

As the Court grew, the need for volunteers also grew. Following Mayor Baker's initiative, the Court's first chief probation officer organized community volunteers. Over 150 individuals representing schools, social agencies, and the police, and other concerned citizens, were recruited to monitor children placed on probation. As the Juvenile Court became more complex, a professional staff was hired to provide service previously provided by volunteers. However, the role of volunteers continued to expand. Educational and religious volunteers provided children in the Detention Home continuity in schooling and a start toward rehabilitation. A Citizens' Advisory Board was established in 1966 to utilize the expertise and knowledge of concerned citizens to advise the Court. An additional advisory board, established in 1981 through the passage of the state's Youth Services Subsidy, involves citizens in the planning and allocation of subsidy funds.

Currently, the volunteer program provides concerned citizens an opportunity to work with or for troubled children on a variety of levels. Opportunities which supplement existing services and those created especially for concerned citizens are available at the main Court or at several satellite offices located throughout the county.

The volunteer process begins with a recruitment effort using local print media, the Volunteer Connection of United Way, and public appeal through speaking engagements to local civic and religious groups. Prospective volunteers are given an initial interview at which they are briefed on volunteer opportunities. The expectant volunteer, upon expressing an interest in a specific opportunity, is then given a

biographical data form to complete. When the form is completed and returned, police background checks are conducted and personal reference letters are solicited. A second interview is conducted to discuss the volunteer's particular interest and a volunteer assignment is made based on the information gathered.

Prior to placement, the volunteer attends an orientation and training session. General information about the Court and specifics concerning the individual assignment are explained and discussed. Also, the volunteer has the opportunity to meet with his/her supervisor. Training is also available to staff supervising volunteers to better equip them in managing volunteers.

Once placed, the volunteer meets regularly with the assigned supervisor and may receive additional training to enhance the volunteer experience. Evaluations are conducted periodically to ensure quality performance and to resolve any problems in the volunteer process.

Volunteer opportunities include the following:

PROBATION ASSISTANTS work directly with youth on probation and their families. The majority of these cases are for minor offenses. Initially, the volunteer meets with the probation officer, family, and child to discuss terms of probation as well as short range goals. The volunteer is responsible for face-to-face meetings with the child and must submit monthly written reports to the probation officer. For this position, the volunteers must be at least 21 years of age, hold a high school diploma, and be willing to commit 4-6 hours per week for one year.

CUSTODY REVIEW BOARD members review the status of children in the custody of the Department of Human Services. Board members read amended case plans and contact caseworkers by telephone for further discussion. They are expected to attend Court hearings for selected cases. These volunteers must be at least 21 years of age and preferably have experience or education in the area of child development or related field. The time commitment is three to four hours a month for one year.

VICTIM AID VOLUNTEERS assist job developers and investigators in assessing the progress of children in completing their work assignment. The volunteers make calls at least two evenings per week from their home and meet face-to-face with job developers on a bi-weekly basis. These volunteers must also be at least 21 years of age.

DETENTION CENTER TESTER/TUTORS assist youth attending the Detention Center School in developing basic reading and math skills. They participate in planning, developing goals, and administering academic testing. Volunteers commit at least three hours per week, must be high school graduates and be at least 21 years of age.

CELEBRITY CACHE VOLUNTEERS provide youth in the Detention Center with educational, motivational, and informational programming to promote self-esteem. Examples of these volunteers are community and business leaders, celebrities, and sports figures.

PUP VOLUNTEERS assist the staff of the Pilot Unruly Program (PUP) with contacting youth and their families. Volunteers assist parents with their problems

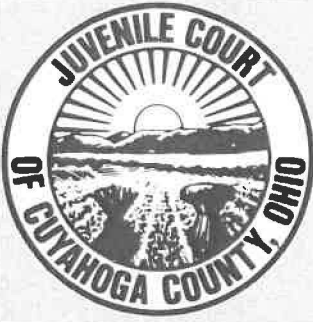
over the telephone, direct parents to appropriate services, and may attend Court hearings in some cases. Volunteers must be at least 21 years of age and high school graduates.

COURT ASSISTERS VOLUNTEERS act as receptionists, handle telephone calls and messages at the Court. These volunteers must be high school graduates, at least 21 years of age and be able to commit at least four hours a week during regular Court business hours.

FRIENDLY VISITORS provide visitation for children in the Detention Center who have not received visitors within a 14 day period. The volunteer meets with one child for one half hour. Visitations are scheduled during the Center's regular visiting hours.

RELIGIOUS VOLUNTEERS network to provide a wide and varied religious experience for the residents of the Detention Center. Children are provided with Sunday church services, weekly Bible study, Tuesday evening church service and Bible distribution twice per month. All religious activities presented are voluntary for residents. Volunteers must be at least 21 years of age and must adhere to the rules of the Detention Center.

The search for new and qualified volunteers is a constant campaign to meet the needs of the Court system and the children it serves. The Court welcomes individuals and groups to inquire about the volunteer opportunities. For further information, contact Barbara H. Boyd, Volunteer Coordinator, at 443-3599, to arrange an appointment.



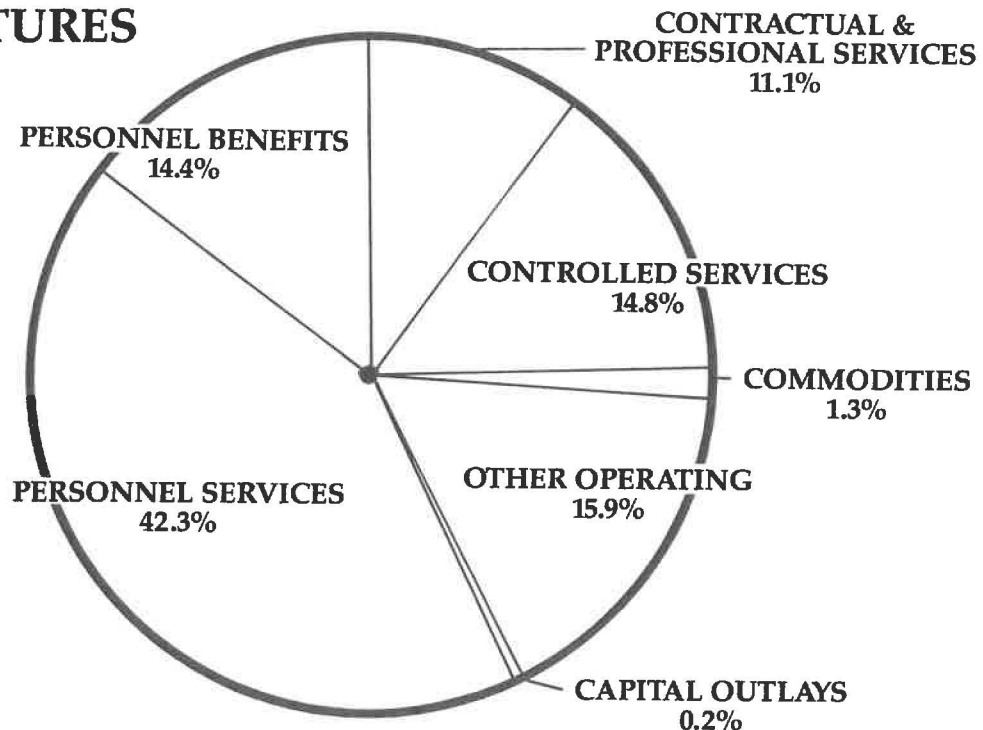
3. Fiscal

GENERAL FUND EXPENDITURES

CATEGORY	ADMINIS- TRATIVE	LEGAL	CHILD SUPPORT	DETENTION CENTER	PROBATION	TOTAL
Personnel Services	\$ 2,839,805	\$2,429,268	\$453,958	\$3,250,585	\$2,674,204	\$11,647,820
Personnel Benefits	984,967	805,296	141,279	1,153,729	881,010	3,966,281
Commodities	110,920	2,521	5,132	228,608	981	348,162
Contractual and Professional Services	1,784,920	999,650	2,160	220,831	50,663	3,058,224
Controlled Services	2,998,409	0	321,527	761,828	0	4,081,764
Other Operating	4,061,466	83,442	72,914	40,291	126,527	4,384,640
Capital Outlays	12,676	8,155	5,381	5,468	28,833	60,513
TOTALS	\$12,793,175	\$4,328,335	\$1,002,353	\$5,661,343	\$3,762,220	\$27,547,426

NOTE: There is a slight difference between the stated column totals and the actual addition of columns due to rounding factors.

1991 EXPENDITURES



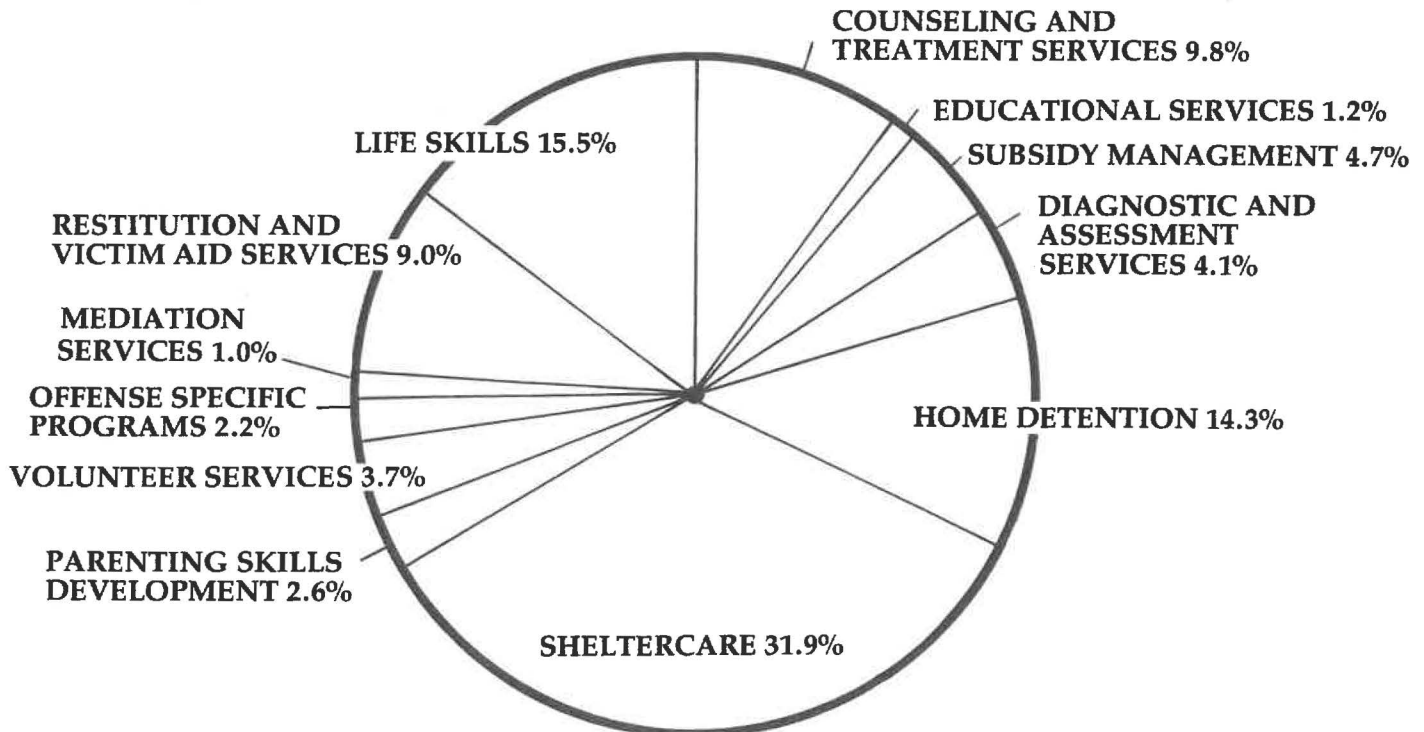
YOUTH SERVICES SUBSIDY

By Category

July 1, 1991-June 30, 1992

CATEGORY	MONEY ALLOCATED	% OF TOTAL
Diagnostic and Assessment Services	\$ 101,934	4.1%
Counseling and Treatment Services	242,475	9.8%
Restitution and Victim Aid Services	223,216	9.0%
Mediation Services	25,155	1.0%
Offense Specific Programs	55,253	2.2%
Volunteer Services	90,960	3.7%
Parenting Skills Development	64,395	2.6%
Sheltercare	789,723	31.9%
Home Detention	354,162	14.3%
Educational Services	28,620	1.2%
Life Skills	383,600	15.5%
Subsidy Management	116,978	4.7%
GRAND TOTALS	\$2,476,471	100.0%

YOUTH SERVICES SUBSIDY BY PERCENTAGE AND CATEGORY





4. Statistics

TABLE 1
CASES REFERRED IN 1991 COMPARED WITH 1990

■ ■ CHILDREN'S CASES	1991			1990		
	Accepted Officially	Resolved At Intake	TOTAL	Accepted Officially	Resolved At Intake	TOTAL
Delinquency:						
Boys:	6,718	2,891	9,609	6,112	2,696	8,808
Girls:	1,003	1,173	2,176	885	1,002	1,887
SUBTOTAL:	7,721	4,064	11,785	6,997	3,698	10,695
Unruly:						
Boys:	204	1,917	2,121	682	1,419	2,101
Girls:	373	1,587	1,960	719	973	1,692
SUBTOTAL:	577	3,504	4,081	1,401	2,392	3,793
Delinquency & Unruly Combined:						
Boys:	6,922	4,808	11,730	6,794	4,115	10,909
Girls:	1,376	2,760	4,136	1,604	1,975	3,579
TOTAL:	8,298	7,568	15,866	8,398	6,090	14,488
Other Children's Cases:						
Traffic:	12,174	0	12,174	11,213	0	11,213
Neglected:	1,768	21	1,789	977	0	977
Dependent:	1,280	5	1,285	830	0	830
Abused:	317	0	317	287	0	287
Application to Determine Custody:	249	0	249	255	0	255
Other:	20	3	23	99	6	105
TOTAL:	15,808	29	15,837	13,661	6	13,667
TOTAL CHILDREN'S CASES:	24,106	7,597	31,703	22,059	6,096	28,155

(table continued on next page)

TABLE 1 (continued)

■ ■ <u>ADULT CASES</u>	1991			1990		
	Accepted Officially	Resolved At Intake	TOTAL	Accepted Officially	Resolved At Intake	TOTAL
Complaint to Establish Parent-Child Relationship:	4,839	0	4,839	4,335	0	4,335
Support/Custody:	327	0	327	301	0	301
Contributing to Delinquency or Unruliness:	24	22	46	30	0	30
Other Adult Cases:	124	120	244	100	25	125
TOTAL ADULT CASES:	5,314	142	5,456	4,766	25	4,791
GRAND TOTAL:	29,420	7,739	37,159	26,825	6,121	32,946

In addition to the above new complaints in 1991 there were 1,017 probation violations, 3,185 motions to show cause to modify adult support orders, and 2,128 annual reviews of children in custody.

TABLE 2

DISPOSITIONS MADE IN OFFICIAL DELINQUENCY AND UNRULY CASES — 1991

DISPOSITIONS	Boys	Girls	GRAND TOTAL
Probation	2,075	348	2,423
Committed—Ohio Department of Youth Services	666	41	707
Committed—Youth Development Center	150	59	209
Aftercare—Ohio Department of Youth Services & Youth Development Center	58	8	66
Return to Ohio Department of Youth Services	28	1	29
Return to Youth Development Center	9	3	12
Private Placement	127	26	153
Return to Private Placement	6	3	9
Supervision—Cuyahoga County Department of Human Services	58	50	108
Temporary Care & Custody—Cuyahoga County Department of Human Services	17	6	23
Private Placement—Cuyahoga County Department of Human Services	5	1	6
Parental Supervision	488	128	616
Bound Over to Criminal Court	55	0	55
Transferred to Other Juvenile Courts	92	17	109
Dismissed	799	212	1,011
Nollied	243	25	268
Withdrawn	51	23	74
Order Made In Other Case	1,889	211	2,100
Other Dispositions Made	122	22	144
TOTAL DISPOSITIONS	6,938	1,184	8,122

TABLE 3

SOURCE OF COMPLAINTS BY INTAKE ACTION — 1991

SOURCE OF COMPLAINT	OFFICIAL			RESOLVED AT INTAKE			ALL CASES		
	Del.	Unr.	Total	Del.	Unr.	Total	Del.	Unr.	Total
Cleveland Police Department	4,114	1	4,115	819	65	884	4,933	66	4,999
Suburban Police Department	2,247	1	2,248	1,737	556	2,293	3,984	557	4,541
Other Police Agency	122	1	123	175	13	188	297	14	311
Cleveland Board of Education	255	1	256	164	308	472	419	309	728
Suburban Boards of Education	22	6	28	30	425	455	52	431	483
Youth Development Center	51	0	51	0	0	0	51	0	51
Detention Center	0	32	32	0	0	0	0	32	32
Ohio Department of Youth Services	21	0	21	0	0	0	21	0	21
Parents	176	248	424	23	1,886	1,909	199	2,134	2,333
Citizens	179	3	182	159	0	159	338	3	341
Department of Human Services	33	60	93	18	46	64	51	106	157
Other Juvenile Courts	131	8	139	25	7	32	156	15	171
Other Sources	93	216	309	4	198	202	97	414	511
GRAND TOTAL	7,721	577	8,298	4,064	3,504	7,568	11,785	4,081	15,866

TABLE 4

ALL CASES FILED BY AREA OF RESIDENCE — 1991 COMPARED WITH 1990

CITY OF CLEVELAND													
Statistical Planning Area	Person Offenses	Property Offenses	Drug Offenses	Other Offenses	1991 Total Delinquency	1990 Total Delinquency	Incorr	Truancy	Curfew	1991 Total Unruly	1990 Total Unruly	1991 Grand Total	1990 Grand Total
Archwood-Denison	24	61	4	16	105	124	49	12	1	62	54	167	178
Buckeye-Shaker	52	74	29	24	179	121	49	6	2	57	34	236	155
Central	92	153	50	50	345	329	93	14	6	113	155	458	484
Clark-Fulton	70	178	14	71	333	345	93	12	16	121	121	454	466
Corlett	48	161	41	57	307	217	83	13	3	99	68	406	285
Cudell	27	83	3	20	133	109	43	15	3	61	40	194	149
Detroit-Shoreway	91	138	29	56	314	278	70	14	14	98	132	412	410
Downtown	9	39	5	18	71	58	17	5	4	26	10	97	68
Edgewater	9	20	4	8	41	34	17	2	1	20	25	61	59
Euclid-Green	26	54	18	11	109	104	45	1	1	47	24	156	128
Fairfax	47	96	35	23	201	168	50	5	4	59	52	260	220
Forest Hills	75	137	89	47	348	267	74	10	6	90	81	438	348
Glenville	141	270	97	104	612	459	101	10	5	116	101	728	560
Hough	102	205	84	63	454	362	133	13	3	149	125	603	487
Industrial Valley	11	34	9	11	65	47	36	7	2	45	15	110	62
Jefferson	30	60	7	8	105	110	37	2	2	41	34	146	144
Kamms Corner	8	40	0	8	56	46	11	0	3	14	18	70	64
Kinsman	40	88	35	31	194	196	52	6	1	59	47	253	243
Lee-Miles	30	97	21	29	177	145	55	3	7	65	46	242	191
Mt. Pleasant	80	261	68	78	487	376	90	10	5	105	109	592	485
North Broadway	35	59	1	23	118	86	29	16	1	46	33	164	119
North Collinwood	28	82	21	17	148	88	41	3	4	48	37	196	125
Ohio City	44	74	18	30	166	180	43	4	10	57	84	223	264
Old Brooklyn	31	78	2	19	130	117	50	10	4	64	65	194	182
Payne/Kirtland Park	40	87	6	33	166	122	92	6	7	105	77	271	199
Puritas-Longmead	28	82	22	18	150	125	53	3	6	62	36	212	161
Riverside	10	29	5	14	58	54	14	2	3	19	18	77	72
South Broadway	40	101	7	36	184	182	48	23	0	71	72	255	254
South Collinwood	43	114	46	24	227	189	38	3	7	48	58	275	247
St. Clair-Superior	65	112	32	36	245	194	43	1	5	49	65	294	259
Tremont	30	93	10	25	158	136	40	12	6	58	53	216	189
Union/Miles Park	72	166	67	63	368	229	95	12	2	109	57	477	286
University	16	47	5	6	74	35	11	1	2	14	28	88	63
West Boulevard	46	110	6	26	188	133	64	12	3	79	64	267	197
Woodland Hills	46	115	41	40	242	219	48	2	4	54	56	296	275
CLEVELAND — TOTAL	1,586	3,598	931	1,143	7,258	5,984	1,907	270	153	2,330	2,094	9,588	8,078

TABLE 4

ALL CASES BY AREA OF RESIDENCE — 1991 COMPARED WITH 1990

SUBURBS Statistical Planning Area	Person Offenses	Property Offenses	Drug Offenses	Other Offenses	1991	1990	Incorr	Truancy	Curfew	1991	1990	1991 Grand Total	1990 Grand Total
					Total Delinquency	Total Delinquency				Total Unruly	Total Unruly		
Bay Village	13	21	4	22	60	89	12	2	11	25	28	85	117
Beachwood	2	0	0	0	2	14	0	1	7	8	3	10	17
Bedford	6	31	3	10	50	50	19	2	3	24	12	74	62
Bedford Heights	15	55	5	19	94	57	13	5	7	25	20	119	77
Bentleyville	0	0	0	0	0	1	0	0	0	0	0	0	1
Berea	32	54	1	11	98	134	19	4	10	33	37	131	171
Bratenahl	0	0	0	0	0	0	0	0	0	0	0	0	0
Brecksville	2	12	1	14	29	28	3	0	8	11	12	40	40
Broadview Heights	7	14	0	22	43	48	5	2	17	24	18	67	66
Brooklyn	14	32	0	18	64	36	7	10	1	18	12	82	48
Brooklyn Heights	0	0	0	0	0	0	0	0	0	0	0	0	0
Brook Park	19	52	1	10	82	111	32	12	11	55	48	137	159
Chagrin Falls	1	10	1	8	20	14	0	0	0	0	1	20	15
Chagrin Falls Township	0	1	0	0	1	3	0	0	0	0	0	1	3
Cleveland Heights	91	210	12	142	455	550	60	75	58	193	202	648	752
Cuyahoga Heights	0	0	0	1	1	0	0	1	0	1	0	2	0
East Cleveland	88	257	73	71	489	438	138	82	32	252	170	741	608
Euclid	64	197	11	69	341	318	83	19	19	121	63	462	381
Fairview Park	7	34	0	18	59	47	6	8	4	18	27	77	74
Garfield Heights	35	80	9	30	154	139	32	10	12	54	34	208	173
Gates Mills	0	2	0	0	2	4	2	0	1	3	1	5	5
Glenwillow	0	2	0	0	2	3	0	0	0	0	0	2	3
Highland Heights	3	5	0	4	12	10	4	2	1	7	4	19	14
Highland Hills	15	1	0	2	18	1	0	0	0	0	0	18	1
Hunting Valley	0	0	0	1	1	1	0	0	0	0	0	1	1
Independence	6	8	0	6	20	11	9	2	0	11	7	31	18
Lakewood	66	274	7	117	464	402	87	35	110	232	236	696	638
Linndale	0	0	0	0	0	0	0	0	0	0	0	0	0
Lyndhurst	7	25	0	17	49	37	8	2	4	14	14	63	51
Maple Heights	24	51	5	26	106	115	27	11	3	41	38	147	153
Mayfield	2	2	0	2	6	1	0	0	0	0	1	6	2
Mayfield Heights	7	26	0	10	43	49	10	3	6	19	21	62	70
Middleburg Heights	15	27	0	7	49	38	9	6	6	21	15	70	53
Moreland Hills	0	7	0	3	10	7	1	0	0	1	3	11	10
Newburgh Heights	2	12	0	2	16	11	0	2	0	2	1	18	12
North Olmsted	18	51	0	15	84	97	21	4	14	39	57	123	154
North Randall	1	2	0	0	3	0	0	0	0	0	2	3	2
North Royalton	7	19	0	9	35	33	13	8	7	28	16	63	49
Oakwood	0	9	1	1	11	20	1	3	0	4	3	15	23
Olmsted Falls	11	18	0	8	37	37	4	2	2	8	12	45	49
Olmsted Township	2	13	0	8	23	22	11	2	1	14	6	37	28
Orange	1	5	1	1	8	15	1	0	0	1	0	9	15
Parma	51	157	1	30	239	229	83	19	9	111	112	350	341
Parma Heights	11	23	0	6	40	46	13	1	3	17	30	57	76
Pepper Pike	0	3	0	5	8	16	0	0	2	2	2	10	18
Richmond Heights	4	10	0	12	26	34	8	11	1	20	7	46	41
Riveredge	0	0	0	0	0	0	0	0	0	0	3	0	3
Rocky River	7	24	0	19	50	70	3	5	2	10	15	60	85
Seven Hills	1	14	0	6	21	35	2	1	0	3	13	24	48
Shaker Heights	36	64	5	47	152	105	10	3	11	24	36	176	141
Solon	5	35	3	10	53	22	7	0	1	8	6	61	28
South Euclid	8	49	0	12	69	64	14	9	16	39	21	108	85
Strongsville	18	57	1	22	98	85	25	4	3	32	19	130	104
University Heights	11	27	0	8	46	51	5	0	8	13	22	59	73
Valley View	0	0	0	1	1	4	1	0	0	1	0	2	4
Walton Hills	1	9	0	2	12	18	4	1	0	5	8	17	26
Warrensville Heights	31	120	12	36	199	207	37	22	14	73	84	272	291
Westlake	3	28	2	16	49	52	12	6	15	33	20	82	72
Woodmere	2	4	0	2	8	1	0	0	0	0	0	8	1
SUBURB TOTAL	772	2243	159	938	4,112	4,030	861	397	440	1,698	1,522	5,810	5,552
Out of County	42	246	18	98	404	414	20	9	24	53	47	457	461
S.P.A. Unknown	4	2	0	5	11	41	0	0	0	0	49	11	90
Offense Unknown	0	0	0	0	0	226	0	0	0	0	81	0	307
CLEVELAND TOTAL	1586	3598	931	1143	7258	5984	1907	270	153	2330	2094	9588	8078
GRAND TOTAL	2,404	6,089	1,108	2,184	11,785	10,695	2,788	676	617	4,081	3,793	15,866	14,488

TABLE 5

DELINQUENCY AND UNRULY COMPLAINTS BY INTAKE ACTION

TYPES OF COMPLAINTS:	OFFICIAL HEARING			RESOLVED AT INTAKE			1991 TOTAL CASES			1990 TOTAL CASES		
	Boys	Girls	Total	Boys	Girls	Total	Boys	Girls	Total	Boys	Girls	Total
Delinquency												
Arson	77	9	86	5	1	6	82	10	92	61	7	68
Assault	1,025	269	1,294	337	155	492	1,362	424	1,786	1,172	353	1,525
Burglary	551	58	609	21	4	25	572	62	634	437	24	461
Disorderly Conduct	211	29	240	415	113	528	626	142	768	555	95	650
Drug Violation	1007	53	1060	46	2	48	1053	55	1108	1003	49	1052
Homicide	30	1	31	0	0	0	30	1	31	30	3	33
Liquor Violation	8	5	13	289	109	398	297	114	411	277	108	385
Receiving Stolen Property	1420	148	1,568	37	11	48	1,457	159	1,616	1,022	94	1,116
Robbery	371	37	408	1	1	2	372	38	410	293	33	326
Sex Offense	137	6	143	28	6	34	165	12	177	200	20	220
Theft	798	253	1,051	866	579	1,445	1,664	832	2,496	1,761	831	2,592
Trespassing	176	12	188	356	89	445	532	101	633	560	80	640
Vandalism	329	33	362	234	23	257	563	56	619	538	48	586
Weapons	221	21	242	78	35	113	299	56	355	224	43	267
Other Delinquency	357	69	426	178	45	223	535	114	649	447	69	516
Complaints Unknown	0	0	0	0	0	0	0	0	0	228	30	258
TOTAL DELINQUENCY	6,718	1,003	7,721	2,891	1,173	4,064	9,609	2,176	11,785	8,808	1,887	10,695
Unruly												
Incorrigibility	199	365	564	1,051	1,173	2,224	1,250	1,538	2,788	1,054	1,064	2,118
Truancy	4	7	11	389	276	665	393	283	676	453	415	868
Curfew	1	1	2	477	138	615	478	139	617	525	171	696
Complaints Unknown	0	0	0	0	0	0	0	0	0	69	42	111
TOTAL UNRULY	204	373	577	1,917	1,587	3,504	2,121	1,960	4,081	2,101	1,692	3,793
GRAND TOTAL — DELINQUENCY & UNRULY	6,922	1,376	8,298	4,808	2,760	7,568	11,730	4,136	15,866	10,909	3,579	14,488

TABLE 6

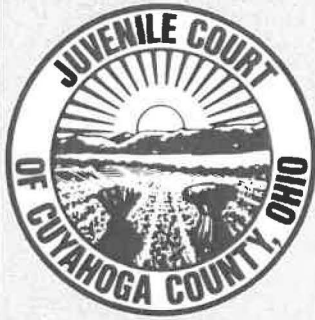
AGES OF DELINQUENT AND UNRULY CHILDREN — 1991

AGES	DELINQUENCY			UNRULY			TOTAL CASES		
	Resolved At			Resolved At			Resolved At		
	Official	Intake	Total	Official	Intake	Total	Official	Intake	Total
Eight and Under	3	31	34	0	11	11	3	42	45
Nine	12	57	69	0	12	12	12	69	81
Ten	31	73	104	0	31	31	31	104	135
Eleven	77	154	231	2	74	76	79	228	307
Twelve	246	250	496	16	186	202	262	436	698
Thirteen	599	456	1,055	60	433	493	659	889	1,548
Fourteen	1,137	611	1,748	114	625	739	1,251	1,236	2,487
Fifteen	1,571	663	2,234	130	785	915	1,701	1,448	3,149
Sixteen	1,917	771	2,688	156	775	931	2,073	1,546	3,619
Seventeen	2,128	998	3,126	99	572	671	2,227	1,570	3,797
GRAND TOTAL	7,721	4,064	11,785	577	3,504	4,081	8,298	7,568	15,866

TABLE 7

POPULATION IN DETENTION SERVICES — 1991

	DETENTION CENTER			HOME DETENTION			SHELTER CARE			TOTAL DETENTION SERVICES		
	Boys	Girls	Total	Boys	Girls	Total	Boys	Girls	Total	Boys	Girls	Total
Under Care — 1/1/91	124	7	131	62	13	75	43	11	54	229	31	260
Admitted During 1991	3,406	561	3,967	899	147	1,046	429	301	730	4,734	1,009	5,743
Released During 1991	3,424	554	3,978	896	144	1,040	432	296	599	4,752	994	5,746
Under Care — 12/31/91	106	14	120	65	16	81	40	16	185	211	46	257
Total Under Care — 1991	3,530	568	4,098	961	160	1,121	472	312	784	4,963	1,040	6,003
Average Daily Population	121.6	14.5	136.2	64.5	10.7	75.3	44.8	17.2	62	231	42.5	273.4
Average Length of Stay	12.6	9.3	12.2	24.5	24.5	24.5	34.6	20.2	28.9	17	14.9	16.6



5. Personnel

DIRECTORY OF 1991 FULL-TIME PERSONNEL (as of 12-31-91)

JUDGES

Hon. Leodis Harris,
Administrative Judge
Hon. Betty Willis Ruben
Hon. Kenneth A. Rocco
Hon. Timothy G. Cotner
Hon. Robert A. Ferreri
Hon. Peter M. Sikora

ADMINISTRATION

William A. Kurtz,
Court Administrator
Jacqueline Tucker

ADMINISTRATIVE SERVICES

Dennis Dinardo,
Director
Janice Anderson
Jack Cervelli
Aida Guzman
Ottie Lucas
Kathleen Masterson
Howard McGuire
Damaris Torres

COMMUNITY SERVICES

Elsie Day,
Director
Lawrence Alesnik
Debbie Armbruster
Sylvia Banks
Helene Barnes-Smith
Edward Becker
Barbara Boyd
Zelma Brown
Lucy Anne Christopher
Glynn Crawford
Mary Davidson
Richard Drost
Renee Edel
Thomas Edwards
Deborah Forkas
Jacqueline Ghani

Jean Panter-Graham
Eleanor Gray
Curtis Halsell
David House
Timothy Howard
Collean Malone
Mark Mattern
Marcie Miller
Mary Lou Mitsch
Steven Neuhaus
Sharon Olsen
Peter Panos
Donald Peak
Mary Sankey
Donald Schwallie
Mona Shelton
David Sugiuchi
Leontyne Van Dyke
Michael Violi
Richard Walker
Katherine Weisbarth
Robert Wilk

DETENTION CENTER

Stephen Norris,
Superintendent
Jacquelyn Abbott
Lorraine Ameer
Kenneth Armstrong
Roger Aytch
Ernest Barber
Garth Beckles
Spencer Bellamy
Carol Bender
Gail Bohanon
Amanda Bradley
Toi Bradley
Irving Brown
Charles Buchanan
Phyllis Burton-Scott
Carol Byrne
Marilyn Cahill
Robert Carlton
Joyce Charles

Brenda Cheatham
Leon Clark
Margaret Coleman-Payne
Judy Collins
Frederick Collins
Sonja Colwell
Lorne Conyers
Debra Coutts
Broderick Crawford
Rickey Darden
Sheila Darden
Albert David
Jose Davis
Luther Demery
Oliver Demery
Alesia Dickson
Cleveland Dillard
Lisa Driscoll
Artley Edwards
Marion Ellis
Lucy Finnegan
Joan Gabbard
Mary Gallagher
Joyce Gavalya
Sharon Gay
Peter Gorski
Gregory Graham
Lloyd Grandberry
Cynthia Grant
Glenn Gudz
Lillian Gunn
Joe Harding
Forrest Harris
Joycene Harris
Felicia Hawkins
David Henderson
Edith Hogan
Cherryl Huff
Patricia Huff
Doris Hunt
Josephine Jackson
Loren Jackson
Leonidoff Jenkins
Terrance Jenkins

Barbara Jeskey
Ruth Johnson
Reginald Johnson
Samuel Johnson
John Jolly
Antoinette Jones
Anthony Jones
James Jones, Jr.
Emma Jordan
Gerald Keller
Deborah King
Bernadette Kopnitsky
Sandra Kusmirek
Jimmie Lassiter
Derrick Lawrence
Deborah Lawson
Allen Leftridge
Sonya Lewis
Wyndelle Lewis
Annette Losey
Carletha Malone
Orlando Mason
John McCarthy
Heather McCullough
Genenne McDougale
Bruce McElroy
Doris McGraw
Laura McIver
Adonis Miles
Linda Minor
Gary Moore
Wyatt Morrow
Michelle Newson
McCauley Odom
Michael Odom
Akil Ogbonna
Kelly Orin
Daniel Parker
Kevin Patton
George Pecuch
James Peterson
Carmela Petway
Jay Primus
Douglas Pyle
Peggy Ranieri

Lesterine Reese
Thomas Rehnert
Suzetta Reust
Edward Reynolds
Margaret Rhoades
Stanley Roberts
Thomas Royer
Bernice Santiago
John Saucier
Carl Schiller
Audrey Scott
Constantine Sevastos
Jesse Sigler
Deborah Simmons
Henry Smith
Michael Smith
Wayne Smith
Theresa Sommer
Calvin Spivey
Danny Thomas
Carolyn Thompson
Patricia Thompson
Mary Trayter
Zelma Tucker
Elizabeth Walker
David Walker
Cheryl West
Perry Wheeler
Tyrone White
Carl Williams
Johnny Williams
Robert Williams
Handy Wright
Lewis Wright, III
Leonard Young

HUMAN & FISCAL RESOURCES

Edith Anderson
Odessa Buchanan
Elvira Harrison
Thelma Miller
Michelle Oszterling
Gayle Price
Sandra Spilker

George Tsagaris
Linda Weaver

LEGAL DEPARTMENT

Richard Graham,
Director
Jeffrey Allen
Cheryl Artis-Huling
Shirley Asale
Vickie Barber
Lori Bebee
Judy Bender
Regina Bennett
Karanetta Bishop
Angelique Black
Janet Bryant
Carol Bugg
Carl Carter
Dana Chavers
Elaine Chimo
Mary Chonko
Douglas Clay
Robert Conklin
Carrie Cook
Cathy Darden
Amber Davis
Yvonne DeRocco
Jack DiCillo
Richard Donelan
John Doolin
Howard Dunn
Joyce Feichtmeier
Sandra Fording
William Fraunfelder
John Gallagher
Anthony Garvin
Gary Garvin
Shirley Gilliam
Christine Grau
Janet Griffin
Catherine Gura
Sabrina Harris
Ellen Hathway
Sharon Hawk
Artie Hicks
John Howley
Cheryl Hruby
Catherine Hynes
Joann Johansen
Debra Johnson
Joyce Johnson
Dorothy Jones
Elaine Jones
Mary Jones
Beverly Jordan
Sandra Joyce
Ethel Keith
Geraldine Kilbane
Bonita King
Subrina King
Lisa Knisely

Colleen LaHood
Barbara Lewis
Gladys Lumbus
Phyllis Marchese
Linda Martin
Margaret Mazza
Priscilla McCorkle
Barbara McMahan
John Menzies
Mark Minnello
Gail Moore
Geraldine Morse
Eleanor Murray
Grace Myers
Robert Neill
David Novak
Teresa Nugent
Rosanne O'Brien
Nancy O'Connell
Michael O'Grady
Alice Palmer
Sandra Pierre
Ann Poole
Rhonda Pritt
Jane Raba
Sandra Roberts
Gayle Rullo
Donnamarie Rycbacki
Deborah Saiter
Sheri Salad
Helen Samec
Robin Schuler
Bonnie Seiber
Brian Sexton
Deborah Shealey
Laura Sledz
Charles Sprague
Jerome Stano
Pamela Stevenson
Wayne Strunk
Diane Stueve
Laura Taylor
Pamela Taylor
John Tutt
Carmen Velez
Sharon Walker
Gregory Weimer
Shirley White
Denise Williams
Pamela Wimberly
Charles Wochna
Donna Wolf
Patricia Yeomans
James Young
Kimberly Zahnke
Eugene Zak

OPERATIONS

Thomas Foster,
Director
Kelvin Agee
John Allen

Milton Anderson
Tonja Bartone
Sheila Beasley-
Shepard
Sharon Berman
Marge Botten
Wilma Bryant
Alja Burns
Mark Carlo
Lora Carpenter
Bonnie Cuccia
Paulette Eads
Charles Easley
Ella Eckhoff
Norman Fadil
James Ferro
Charles Givhan
Sheila Griggs-King
Beverly Hamilton
Loretta Heard
Wanda Hunter
Michelle Johnson
Marian Jones
Walter Jones
Morris Jordan
Rowena Kowaluk
Tamela Lett
Carol Lovett
Leandra Majors
Ruthi McAdoo
Benjamin McCants
Jeffrey Moore
Stephen Moore
Cynthia Niskala
Rudolph Perme
Carlos Robinson
Samantha Sarli
Lawrence Seaton
Murray Semple
Lethia Shields
Rosalind Stennis
Laverne Truett
Granville White
Robert Wick
Margaret Williams
Morris Williams

PROBATION DEPARTMENT

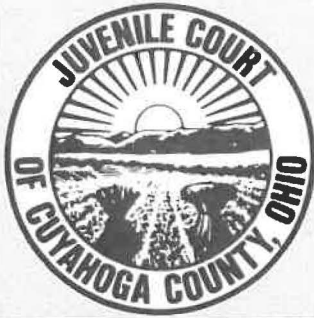
Andrew J. DeSanti,
Director
Elie Abouserhal
Jerald Arnold
Bernice Bailey
Danya Bailey
Norma Barbour
Ethel Batts
Cesealy Billington
Leslie Blakemore
David Bonem
Terrence Brady
Maria Broadus

Martha Brown
Karmin Bryant
David Buehner
Gregory Bufford
Ann Chambers
Christopher Chard
Carol Cole
Martha Conway
Anthony Cook
Pamela Daniel
Timothy Dickey
Gwenyth Edwards
Laura Eshler
Thomas Evans
Linda Fields
Thomas Gaines
Kathryn George
William Gibson
Christine Godfray
Donna Graves
Charles Gute
Herman Hairston
Timothy Hamilton
Robert Hampton
Todd Hendrix
Marguerite Henry
Kenneth Hirz
Martin Hoover
David Horton
Lebron Jackson
Donna Jezewski
Marcee Jones
Morris Jones
Sandra Jones
Sarah Kilbane
Norman Kiner
Celeste Laster-Cantie
Joseph Ledinski
Kathy Leftridge
Robert Lewis
Mary Ann Lingis
John Lowey
Annette Manco
Thomas Mathew
Kiturah Mathias
Angela Matthews-
Baker
Barbara McCullough
Timothy McDevitt
Yolanda McLemore
Jeanne Metzger
John Miller
Linda Miller
Daniel Mouhlas
Margaret Mroz
Christina Norris
Matthias Novak
Ronald Nowakowski
Patrick O'Donnell
Barbara Oliver
Terrence Palange
Jon Parker

Carolyn Penn
Donald Perry
Kristine Phillips
Ronald Pippen
Anita Pisani
Leon Pitts
Barbara Pope
Kathleen Potter
John Puch
Carole Radey
Lawrence Redmond
Bruce Richardson
Virgilio Rivera
James Rivers
James Robertson
Candida Rodriguez
Judith Serrano
Wandra Simmons
Cathleen Smith
Devera Smith
Jack Sonneborn, Jr.
Mary Spearman
Juliet Stephens
Dwight Sutherland
Valerie Taylor
Bobby Tinnon
James Tribble
Michelle Virden
Michael Wagner
Jacqueline Warren
Gerald Weil
Jannie Whitehead
Mary Wilhelm
Karen Wimberly
Donald Woodruff

RESEARCH AND INFORMATION SERVICES

David Swedlow,
Director
Peter Baumgartner
Pamela Brown
Linda Carmicle
Frances Ferro
Richard Gallitto
Rita Golembiewski
Gwendolyn Grady
Barbara Hill
Linda Hill
Karen Johnson
Marvelyn Lee
Margaret Payne
John Pokorny
Johnny Pollard
Margaret Seese
Jeanette Steele
Helen Ward
E. G. Wheeler
Donna Williams



6. Locations AND SERVICES

MAIN COURT

2163 East 22nd Street
Cleveland, Ohio 44115
443-8400

Services: Courtrooms • Administration • Legal Department • Probation Department • Detention Center Operations • Community Services • Human Resources • Research and Information Services

LOEW'S BUILDING

1515 Euclid Avenue
Cleveland, Ohio 44115
443-5800

Services:
Courtrooms • Child Support Services

SOUTHWEST OFFICE

5361 Pearl Road
Parma, Ohio 44129
749-1200

Services:
Intake • Probation

NEAR WEST OFFICE

4115 Bridge Avenue
Cleveland, Ohio 44113
281-1630

Services:
Intake • Probation

UNIVERSITY CIRCLE OFFICE

1922 East 107th Street
Cleveland, Ohio 44106
795-3497

Services:
Intake • Probation

EAST CLEVELAND OFFICE

15815 Euclid Avenue
East Cleveland, Ohio 44112
851-3019

Services:
Intake • Probation

SOUTHEAST OFFICE

5311 Northfield Road
Bedford, Ohio 44146
663-6583

Services:
Intake • Probation

LAKWOOD OFFICE

12650 Detroit Avenue
Lakewood, Ohio 44107
521-0334

Services:
Intake

EUCLID OFFICE

555 East 222nd Street
Euclid, Ohio
289-8299

Services:
Intake

WALTER G. WHITLATCH BUILDING

1910 Carnegie Avenue
Cleveland, Ohio
443-5005

Services:
Home Detention